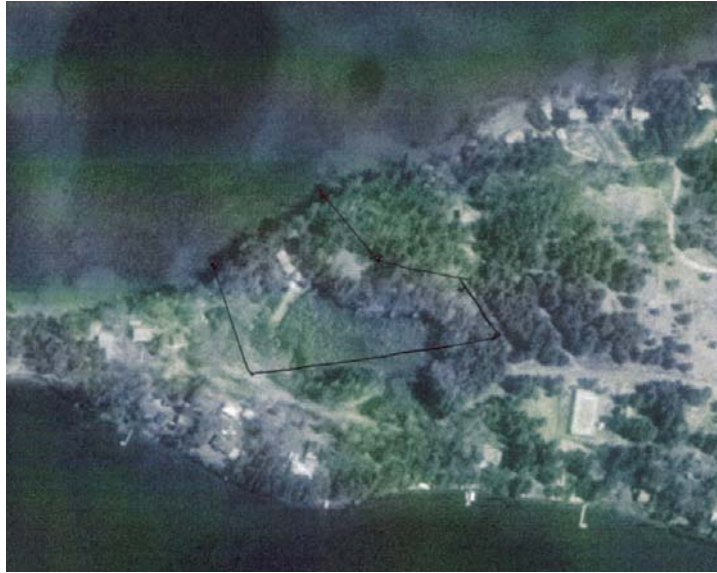
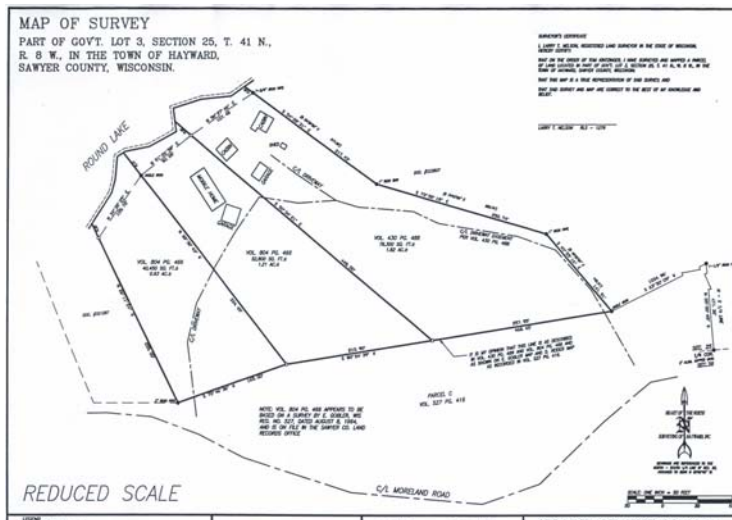


## AERIAL PHOTO APPROXIMATE BORDERS



## SURVEY 12532W & 12478W MORELAND ROAD



Call Tom at 715-462-3770. \$1,150,000 reduced from original price of 1.4 million includes three surveyed lots with 303+ feet of frontage and 4+ acres of land (about 1.25 acres of lowland). Rare, exceptional estate/executive or family compound type property on Big Round Lake (Moreland Road) by Hayward, WI with privacy is for sale. Has true sandy beach and very low elevation. NWN exposure with open view of main part of lake and huge White Pine trees are present. Two connecting driveways are separated by about 700 feet on Moreland road. Enough room to potentially build two or three homes, carriage house, and pole building. Two 50+ year old 3 season cabins, two garages and pump house are on property now. There is one point well and one additional well on property. Small newly rebuilt deck on lake. Newer 6 bedroom septic system is on eastern lot. Natural gas, phone and electricity are near main building sites. Call Tom at 715-462-3770. More information and pictures are at [www.roundlakehaywardwi.com](http://www.roundlakehaywardwi.com). Realtors welcome and will pay 2% commission. May sell lots individually and the prices would be as follows: two eastern lots together \$995,000; for two western lots \$645,000; eastern lot \$695,000; and western lot for \$330,000.